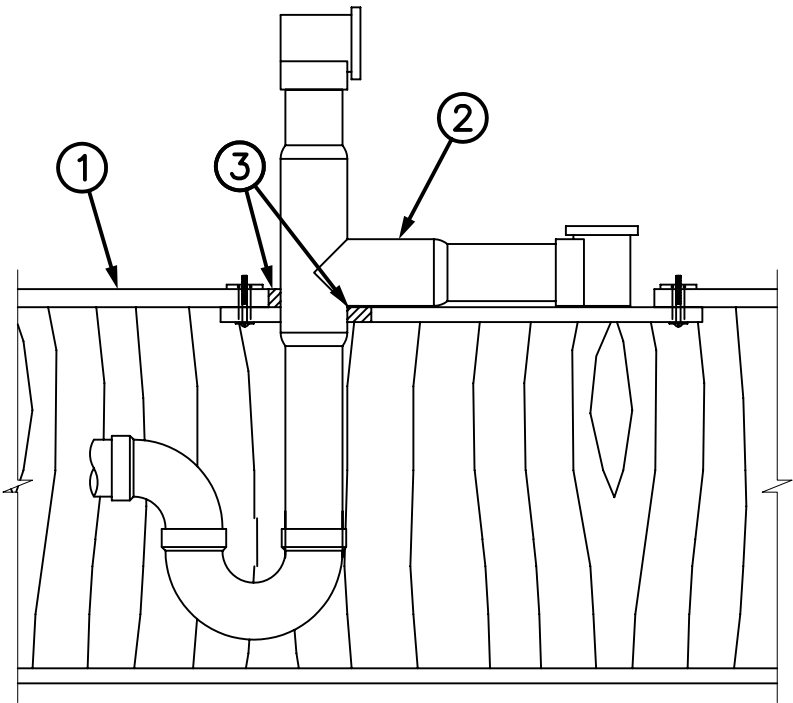
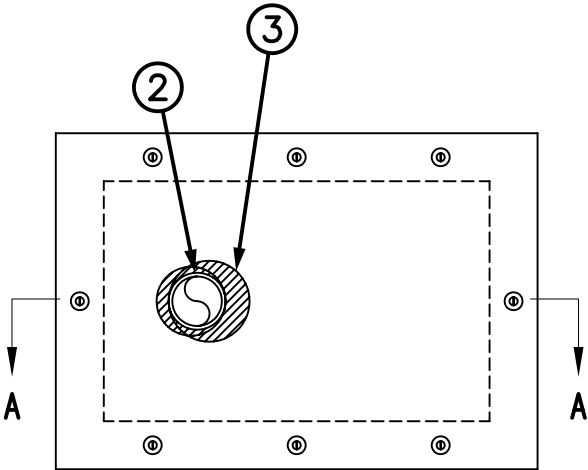


System No. F-C-2262

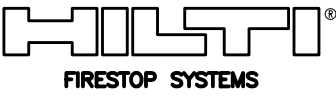
F Rating - 1 Hr

T Rating - 1 Hr

FC 2262



SECTION A-A



Reproduced by HILTI, Inc. Courtesy of Underwriters Laboratories, Inc. June 01, 2004



# System No. F-C-2262

F Rating – 1 Hr

T Rating – 1 Hr

FC 2262

1. Floor-Ceiling Assembly – The 1 hr fire-rated solid or trussed lumber joist floor-ceiling assembly shall be constructed of the materials and in the manner specified in the individual L500 Series Floor-Ceiling Designs in the UL Fire Resistance Directory. The general construction features of the floor-ceiling assembly are summarized below:

A. Flooring System – Lumber or plywood subfloor with finish floor of lumber, plywood or Floor Topping Mixture\* as specified in the individual Floor-Ceiling Design. Rectangular cutout in flooring to accommodate the bathtub drain piping (Item 2) to be max 8 in. by 12 in. Cutout to be patched on underside of subfloor using one layer of min 3/4 in. thick plywood or min 5/8 in. thick gypsum board (Item 1C) sized to lap min 2 in. beyond each edge of rectangular cutout. Patch split into two pieces at opening and hole-sawed for bathtub drain piping. Diam of opening hole sawed through patch to accommodate drain piping (Item 2) to be 1 in. larger than outside diam of drain piping and positioned such that the annular space between drain piping and periphery of opening is min 0 in. (point contact) to max 1 in. Two pieces positioned around drain piping, with cut edges tightly butted, and screw-attached to underside of subfloor with 1-1/4 in long steel screws spaced max 6 in. OC.

B. Wood Joists\* – Nom 10 in. deep (or deeper) lumber, steel or combination lumber and steel joists, trusses or Structural Wood Members\* with bridging as required and with ends firestopped.

C. Gypsum Board\* – Nom 5/8 in. thick, 4 ft wide as specified in the individual Floor-Ceiling Design.

2. Drain Piping – Nom 1-1/2 in. (or smaller) diam Schedule 40 acrylonitrile butadiene styrene (ABS) or polyvinyl chloride (PVC) pipe and drain fittings cemented together and provided with ABS or PVC bathtub waste/overflow fittings. Annular space shall be min 0 in. (point contact) to max 1 in.

3. Fill, Void or Cavity Materials\* – Min 5/8 in. depth of fill material applied within the annulus, flush with both surfaces of plywood or gypsum board patch. A min 1/2 in. diameter bead of sealant applied at the pipe/plywood or pipe/gypsum board interface at point contact location on the bottom side of patch.

HILTI CONSTRUCTION CHEMICALS, DIV OF  
HILTI INC – CP 606 Flexible Firestop Sealant

\*Bearing the UL Classification Mark



Reproduced by HILTI, Inc. Courtesy of  
Underwriters Laboratories, Inc.  
June 01, 2004

