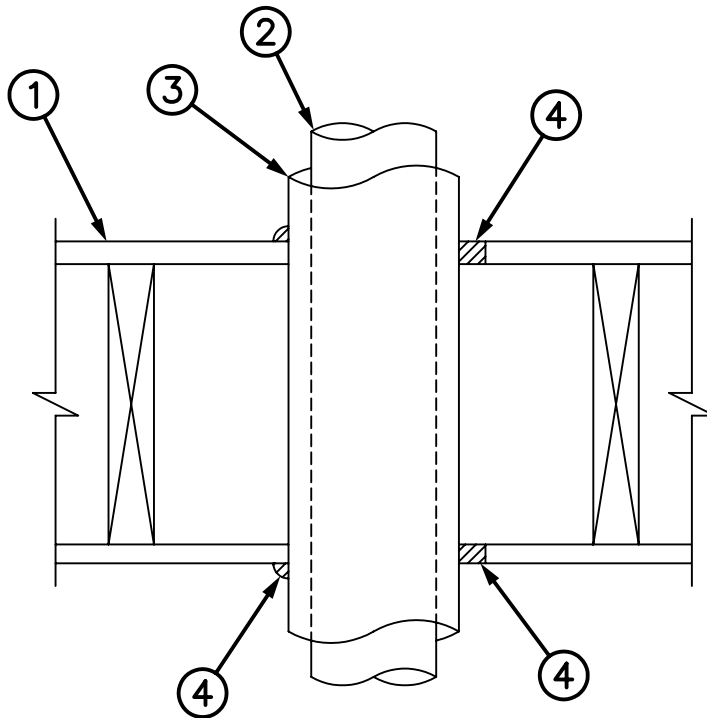


System No. F-C-5065

F Rating - 1 Hr

T Rating - 3/4 Hr

FC 5065



1. Floor-Ceiling Assembly - The 1 hr fire-rated solid or trussed lumber joist floor-ceiling assembly shall be constructed of the materials and in the manner specified in the individual L500 Series Floor-Ceiling Designs in the UL Fire Resistance Directory. The general construction features of the floor-ceiling assembly are summarized below:

- A. Flooring System - Lumber or plywood subfloor with finish floor of lumber, plywood or Floor Topping Mixture* as specified in the individual Floor-Ceiling Design. Max diam of opening shall be 6-1/2 in.
- B. Wood Joists* - Nom 10 in. deep (or deeper) lumber, steel or combination lumber and steel joists, trusses or Structural Wood Members* with bridging as required and with ends firestopped.
- C. Gypsum Board* - Nom 4 ft wide by 5/8 in. thick as specified in the individual Floor-Ceiling Design. Gypsum board secured to wood joists or furring channels as specified in the individual Floor-Ceiling Design.

1A. Chase Wall - (Optional, Not Shown) - The through penetrants (Item 2) may be routed through a 1 hr fire rated single, double or staggered wood stud/gypsum board chase wall. Depth of chase wall stud cavity to be min 1/2 in. greater than diameter of opening cut in sole and top plates to accommodate the through penetrant (Item 2). The chase wall shall be constructed of the materials and in the manner specified in the individual U300 Series Wall and Partition Designs in the UL Fire Resistance Directory and shall include the following construction features:

- A. Studs - Nom 2 by 4 in., 2 by 6 in. or double nom 2 by 4 in. lumber studs.
- B. Sole Plate - Nom 2 by 4 in., 2 by 6 in. or parallel 2 by 4 in. lumber plates, tightly butted. Max diam of opening is 6-1/2 in.
- C. Top Plate - The double top plate shall consist of two nom 2 by 4 in., two nom 2 by 6 in. or two sets of parallel 2 by 4 in. lumber plates, tightly butted. Max diam of opening is 6-1/2 in.
- D. Gypsum Board* - Thickness, type, number of layers and fasteners shall be as specified in the individual Wall and Partition Design.



Reproduced by HILTI, Inc. Courtesy of
Underwriters Laboratories, Inc.
June 28, 2004



System No. F-C-5065

F Rating - 1 Hr

T Rating - 3/4 Hr

FC 5065

2. Through Penetrants - One metallic tube or pipe to be installed concentrically or eccentrically within the opening. Tube or pipe to be rigidly supported on both sides of floor-ceiling assembly. The following types and sizes of metallic pipes, conduits or tubing may be used:

- A. Copper Tube - Nom 4 in. diam (or smaller) Type L (or heavier) copper tube.
- B. Copper Pipe - Nom 4 in. diam (or smaller) Regular (or heavier) copper pipe.
- C. Steel Pipe - Nom 4 in. diam (or smaller) Schedule 10 (or heavier) steel pipe.
- D. Iron Pipe - Nom 4 in. diam (or smaller) cast or ductile iron pipe.

3. Tube Insulation - Plastics+ - Nom 3/4 in. thick acrylonitrile butadiene/polyvinyl chloride (AB/PVC) flexible foam furnished in the form of tubing. The diam of opening shall be 2-1/2 in. larger than the nom diam of penetrant. The space between the insulated tube or pipe and the periphery of the opening shall be min 0 in. (point contact) to max 7/8 in.

See Plastics+ (QMFZ2) category in the Plastics Recognized Component Directory for names of manufacturers. Any Recognized Component tube insulation material meeting the above specifications and having a UL 94 Flammability Classification of 94-5VA may be used.

4. Fill, Void or Cavity Materials*-Sealant - Min 3/4 in. thickness of sealant applied within the annulus flush with the top surface of the floor or sole plate and min 5/8 in. thickness of sealant applied within the annulus flush with the bottom surface of gypsum board or lower top plate. A min 1/2 in. diameter bead of sealant applied at the insulation/subflooring or sole plate interface and the insulation/gypsum board or top plate interface at point contact locations.

HILTI CONSTRUCTION CHEMICALS, DIV OF
HILTI INC - CP 606 Flexible Firestop Sealant

+Bearing the UL Recognized Component Mark

*Bearing the UL Classification Mark



Reproduced by HILTI, Inc. Courtesy of
Underwriters Laboratories, Inc.
June 28, 2004

